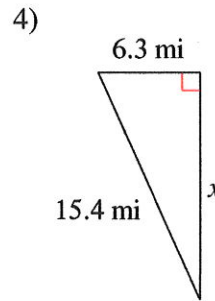
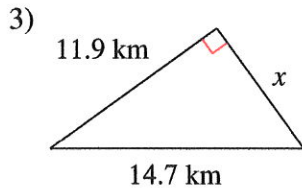
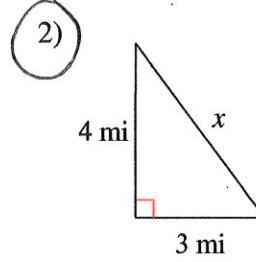
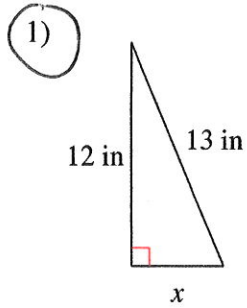


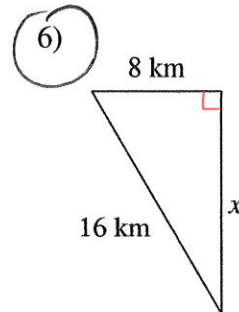
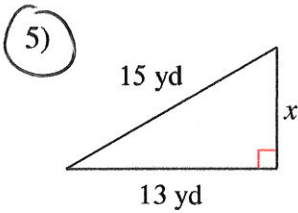
DO ONLY CIRCLED PROBLEMS!

The Pythagorean Theorem and Its Converse

Find the missing side of each triangle. Round your answers to the nearest tenth if necessary.



Find the missing side of each triangle. Leave your answers in simplest radical form.



Find the missing side of each right triangle. Side c is the hypotenuse. Sides a and b are the legs. Leave your answers in simplest radical form.

7) $a = 11$ m, $c = 15$ m

8) $b = \sqrt{6}$ yd, $c = 4$ yd

Special Right Triangles

Find the missing side lengths. Leave your answers as radicals in simplest form.

